

## **eBox Citizen**

**User manual for  
partner institutions**



# eBox Citizen: user manual for partner institutions

## Contents

Publication in eBox: conditions.....	pages 2 - 3
Publication process.....	page 4
Identification card.....	pages 5 - 7
Technical data.....	page 8

This document is intended for the institutions, partners and future partners of the MySocialSecurity portal who want to publish their documents in the eBox Burger. The steps to be followed and the conditions for publishing in the eBox Burger are given below.

### 1. Becoming a partner (institution)

Registration via the MySocialSecurity portal. To find out everything about the portal: <https://www.mysocialsecurity.be>

### 2. Becoming an eBox sender (institution – application)

Within the framework of the eBox publications a sender is always identified by an “institution – application” pair. The sender can use the web service SOA EboxMessage provided that he fulfils the following conditions:

#### - **Competent to publish**

To become an eBox sender the card for the eBox sending request must be filled in. This card is available in this document (pages 5 – 7). The first part of this card is concerned with the identification of the eBox sender (institution and application), while the second part determines a message type (see section below). This card must be validated in order to obtain permission for publication.

The verifications carried out during a publication in eBox are made on two levels:

- Level 1: The institution is competent to use the WS EboxMessage. The list of competent institutions can be found in the Unique File of the WS.
- Level 2: The “institution application” pair is competent to publish the message type stated in the query. This is verified at the level of the WS itself, on the basis of the information on the certificate and of the eBox configuration.

#### - **Possession of a X.509 certificate**

Each SOAP query sent to the WS EboxMessage must be signed by an X.509 certificate. This certificate should state the responsible institution and the application URN (see page 7 of the technical data). The certificate details (URN of the application and CBE of the institution) are validated by the eBox team on the basis of the data on the card.

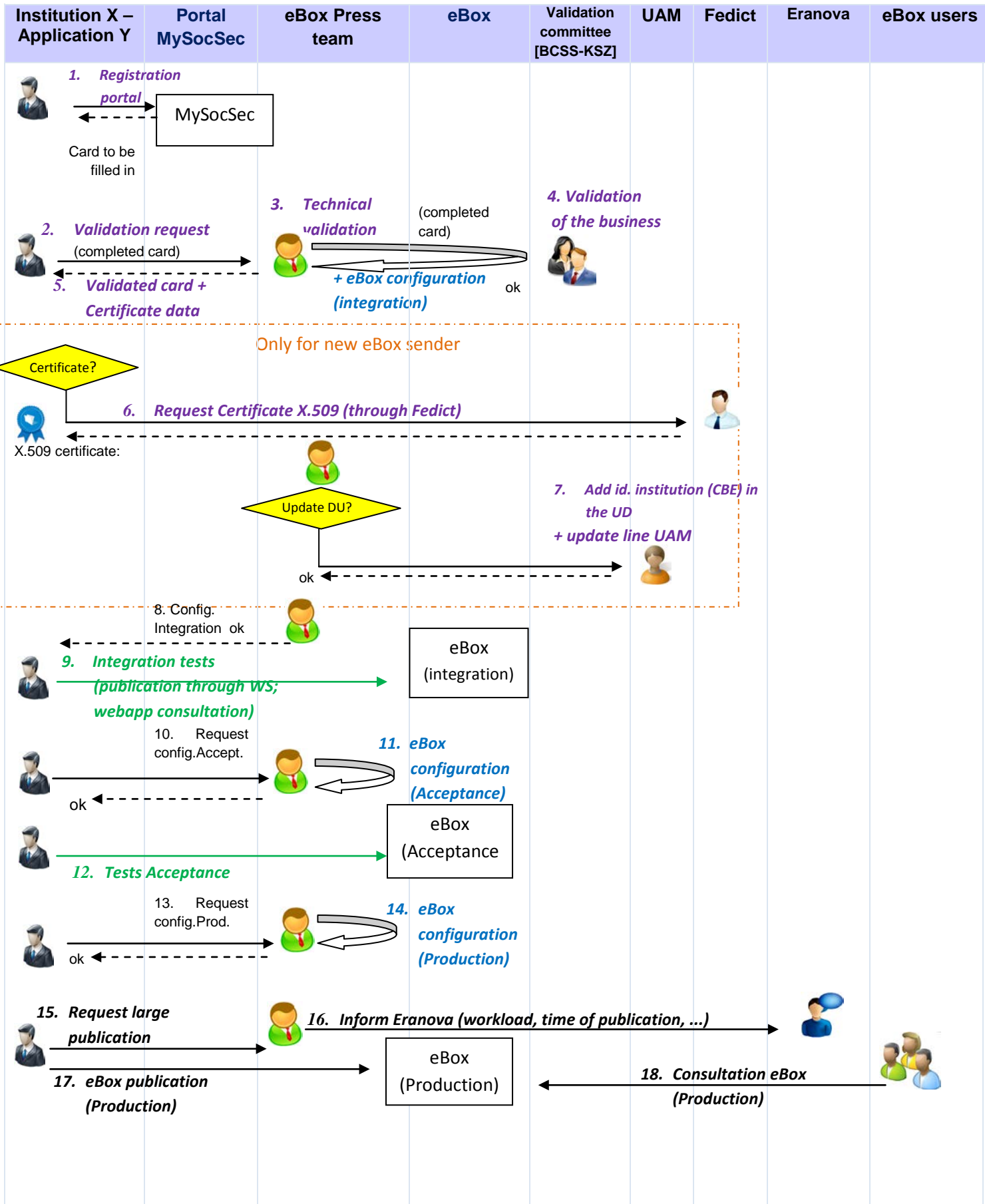
After validation of the card the certificate can be obtained at Fedict. If necessary the eBox team can generate a test certificate (only usable in Integration by the portal clients). Only the official certificate can be used for the Acceptance and Production environments.

### 3. eBox sending request of a new message type

Each message sent in eBox belongs to a certain message type. Each message type defines a number of data required to publish a document that is to be made available to a user. Example: sender (institution – application) competent to publish this message type, validity period, expected charge, expected format, etc.

Each sender who wants to make a new publication type in eBox must define a new message type via the card of the sending request available in this document (pages 5 – 7). For a sender already known by eBox only the second part of the card has to be completed. The completed card must be sent to [e-Box-Pers@smals.be](mailto:e-Box-Pers@smals.be). After technical validation (eBox team) and validation by the business (validation committee) the process to permit publication in eBox may proceed according to the following diagram (see page 3).

Process:



### Card to be completed for the eBox sending request

<b>Sending institution &amp; application</b>		
Identification of an eBox sender (institution – application) for which one or several message types can be defined (next page).		
<b>Known eBox sender?</b>	If yes, institution/application? If no, complete card.	<i>Yes/No</i>
<b>Institution</b>	Institution sending the publication, identified by the BECBE number on the X.509 certificate (OU=urn:be:fgov:kbo-bce:organization:cbe-number:0123456789) ( <i>example: NSSO, NEO, CBSS, etc.</i> )	<b>CBE:</b>
		<b>Name (FR, NL, DE):</b>
		<b>Abbreviation (FR, NL, DE):</b>
<b>Application</b>	URN that identifies the sending application (CN= <i>Application identifier</i> on the X.509 certificate). ( <i>example: subsidie:betaling:npamstat</i> )	
<b>Name of the application (FR, NL, DE)</b>	Name of the application in each language (FR, NL, DE):	
<b>Description of the application (FR, NL, DE)</b>	Short description of the application in each language (FR, NL, DE):	
<b>Contact person + tel.</b>	Name and telephone number of persons responsible for sending application.	

<b>Definition of message types</b>		
Each message type is identified for each type of eBox publication with the same “business” meaning. For example, sending of <i>notification X, certificate Y, form Z</i> , etc. Each message type is linked to various elements that are required for publication in the eBox: sending application and institution, life of messages, expected message format, expected target public, expected charge, etc.		
Message type #1		
<b>Request type</b>	Creation message type / change / deletion	
<b>Name of the message type</b> (FR, NL, DE)	Name of the message type in each language (FR, NL, DE).	
<b>Reference of the message</b>	Identification of the message type.	<i>(Assigned by eBox Press)</i> <i>(to be completed if the request is of the type “change” or “deletion”)</i>
<b>Description of the message type</b> (FR, NL, DE)	Short description of the message type in each language (FR, NL, DE).	
<b>Date put into production</b>	Date given for the first publication of this message type in Production.	
<b>Ticket structure</b>	Portal structure, regular expression ( <i>e.g.: 13 alfanum.</i> )	
<b>Format of the document</b>	Format of the document (.pdf, .doc, .csv, etc.). The .pdf format is advised.	
<b>Permit the update</b>	Permit a publication for an existing ticket/sequence pair, that cancels and supersedes the existing document.	Yes/No
<b>Validity period</b>	Validity period of this type of documents. The documents are no longer valid after this period and are no longer visible in the eBox ( <i>example: 15 days, 2 months, 1 year, etc.</i> ).	

<b>Data required for validation by the business</b>		
<b>Objective of publications</b>	What is the objective of this type of messages?	
<b>Process description</b>	Describe the workflow appropriate to the eBox publication of this message type.	
<b>Suitable scenario</b>	E.g.: Synchronous / Asynchronous / Distribution	
<b>Sent data</b>	Description of data sent and their objective	
<b>Authentic source</b>	Is the sending institution the authentic source of the published data? If no, what is the authentic source?	
<b>Additional details</b>		
<b>Expected number of users</b>	Number of users involved with this document type.	
<b>Sending frequency</b>	E.g.: Daily, weekly, three monthly, annually, etc.	
<b>Volume of publications for this frequency</b>	E.g.: 70 publications/day	
<b>Average size of documents sent</b>	E.g.: 10 kB/pdf	
<b>Specific time for sending</b>	E.g.: every Monday, every first Monday of the month, etc.	
Repeat the "message type" block as many times as necessary.		

**Technical data:**

The WS EboxMessage is available in three environments: Integration, Acceptance and Production. An eBox configuration is required for each environment: this configuration will be carried out in Integration as soon as the validation is completed. The Acceptance and Production configurations will then be carried out on request (see process diagram, page 3).

For the documentation of the WS EBoxMessage

[http://portalinfo.smals.be/fr/news/Components/Site\\_Updates/20120405-ebBoxMessage.html](http://portalinfo.smals.be/fr/news/Components/Site_Updates/20120405-ebBoxMessage.html)

At present the publications are always personalised (sending a document involves one or a maximum of five recipients, each recipient is identified by his entity and his position). Please note that it will soon be possible to make a large publication of the same document to a list of eBox.

WS EboxMessage: EndPoint URL:

- Integration:
  - o <https://leonardo.smals-mvm.be:4433/EBoxMessage/v1> (clients portal)
  - o <https://leonardo.smals-mvm.be:4433/EBoxMessage/v1> (clients extranet)
- Acceptance: <https://professionalservices-acpt.socialsecurity.be/EBoxMessage/v1>
- Production: <https://professionalservices.socialsecurity.be/EBoxMessage/v1>

X.509 certificate: the sending institution and application must be identified on the X.509 certificate that is used to sign the queries for the WS EboxMessage (via OU and CN respectively).

X509	Value	Comment
C	BE	-
O	Federal Government	-
OU	<i>Institution Name</i>	Example OU=National Social Security Office
OU	OU=urn:be:fgov:kbo-bce:organization:cbe-number:\${CBE}	Example for institution with CBE 12345676890 this OU must be OU=urn:be:fgov:kbo-bce:organization:cbe-number:1234567890
CN	<i>Application identifier (URN)</i>	-

Web application "eBox Burger": URL:

- Integration: <http://tilia10.smals-mvm.be:7001/web4bis/Citizen>
- Acceptance: <https://wwwacc.socialsecurity.be/webebox/Citizen>
- Production: <https://www.socialsecurity.be/webebox/Citizen>